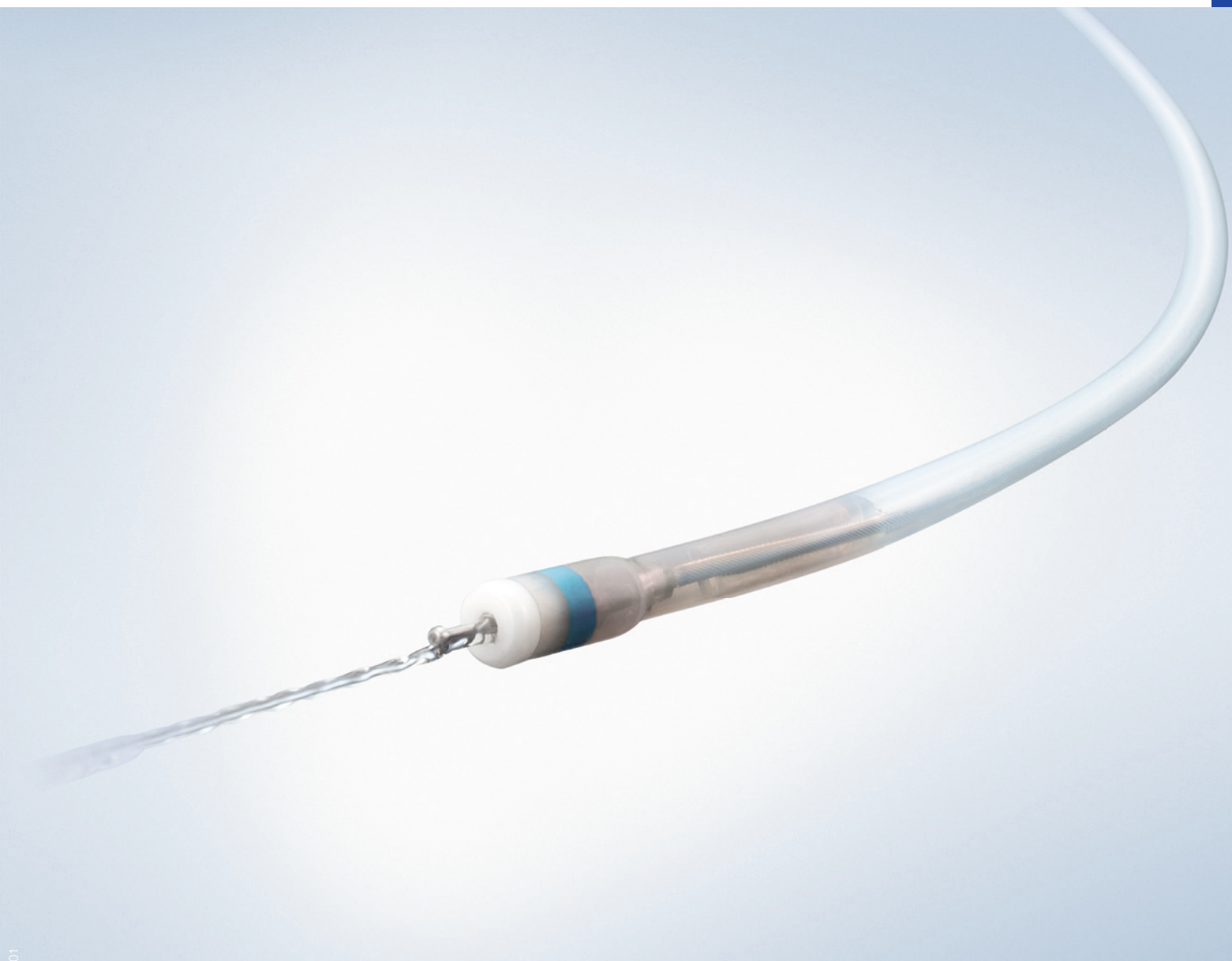


Single-Use Electrosurgical Knife

DualKnife J

New Jet Function to Help Shorten Procedure Times



Advancing the Evolution of DualKnife J

Submucosal Injection Capability Supports More Reliable and More Effective ESD Performance

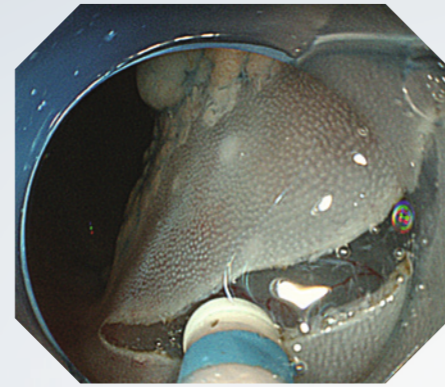
Now the DualKnife does even more. With the addition of a convenient jet, the new and evolved DualKnife J makes operations easier and reduces the time it takes to perform an ESD procedure.

Knob-Shaped Tip

Prevents the knife from slipping and also allows fibers to be hooked up – thereby facilitating a wide variety of cutting techniques during incision and dissection.

Sheath Marking

Blue marking on the distal end helps improve the visibility of the sheath tip in the endoscopic field of view.



Slim Sheath to Maintain Suction Capability

A slim sheath of 2.0-mm diameter helps maintain suction capability in the scope channel while its rigidity supports smooth incision and tissue dissection.

Two-Step Knife Length Adjustment

Facilitates easy handle operation and helps reduce perforation risk.



Injection Port

Addition of a new jet function with distal water exit allows saline injection to be performed after cutting – without replacing the device.

Two Knife Lengths
Designed for use in the upper and lower gastrointestinal tract.

2.0 mm

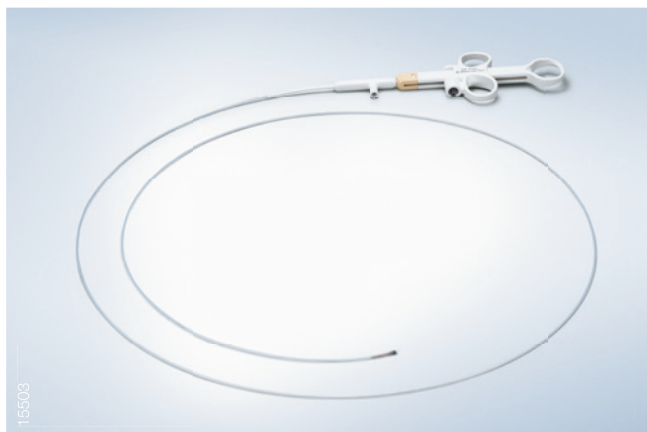
1.5 mm



15505
15506

15501

DualKnife J



Specifications

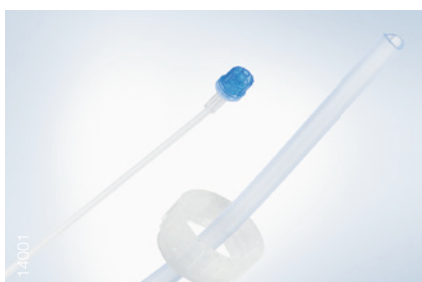
Article Name	Article Number	Quantity	Min. Working Channel Ø	Working Length	Knife Length
KD-655L	N5405030	1	2.8 mm	1650 mm	2.0 mm
KD-655Q	N5405130	1	2.8 mm	1950 mm	1.5 mm
KD-655U	N5405230	1	2.8 mm	2300 mm	1.5 mm

Tubing

DualKnife J can be used together with the Olympus Flushing Pump OFP-2 in connection with the following sterile, single-patient tubes:



OFP-2 Pump



MAJ-1681



MAJ-1682

Specifications

Article Name	Article Number	Quantity	Description
MAJ-1681	K10026641	10	Accessory port tube with bottle cap
MAJ-1682	K10026686	10	Accessory port tube with spike

As medical knowledge is constantly growing, technical modifications or changes of the product design, product specifications and accessories may be required.

OLYMPUS

OLYMPUS EUROPA SE & CO. KG
 Postbox 10 49 08, 20034 Hamburg, Germany
 Wendenstrasse 14-18, 20097 Hamburg, Germany
 Phone: +49 40 23773-0, Fax: +49 40 233765
 www.olympus-europa.com

