

OLYMPUS

Your Vision, Our Future

Endo) **Therapy**

Single-Use Electrosurgical Knife

HOOCKNIFE J

New Jet Function to Help Shorten Procedure Time



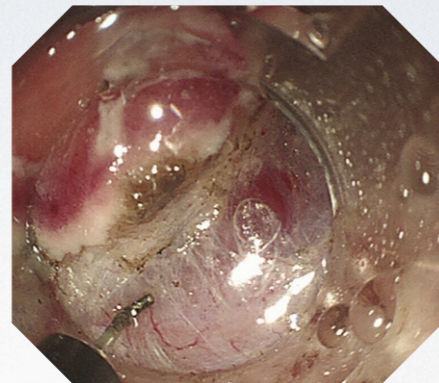
ADVANCING THE EVOLUTION OF HOOKKNIFE J

Submucosal Injection Capability Supports More Reliable and More Effective ESD Performance

Now the HookKnife does even more. With the addition of a convenient jet, the new and evolved HookKnife J will help you work and reduce the time it takes to perform an ESD procedure.

Submucosal Injection

The addition of a new jet function lets you perform saline injection after cutting – without changing devices.



41383



41384

Hooking Technique with Precision and Control

The new HookKnife J is designed to help you take advantage of the hooking technique. Using this technique will help you dissect fibrotic tissue in a narrow lumen with precision and control – even from a perpendicular direction.

Distal L-shaped Hook

Ideal for hooking tissue and pulling it away from the mucosa and proper muscle layer, even from a perpendicular direction.

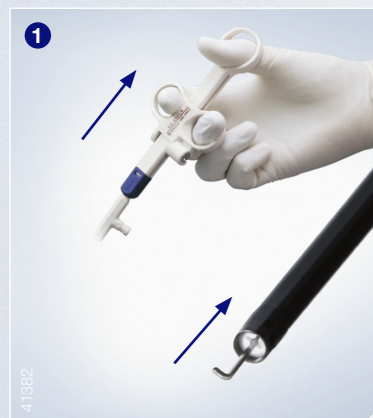
Rotation and Lock Function

Rotatable when the handle is moved slightly back. Locked when the handle is fully extended.

Two Versions

Designed for use in the upper and lower gastrointestinal tract.

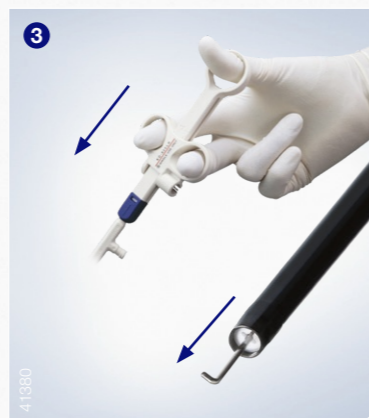
How to Use the HookKnife J – Please refer to the information provided with the device for detailed instructions.



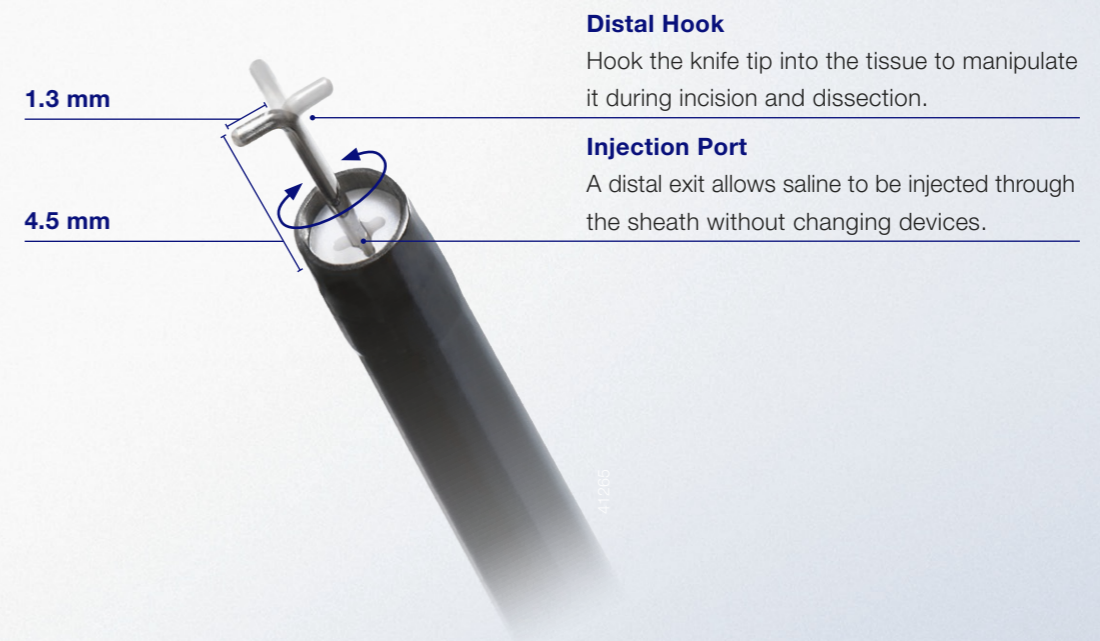
1 Pull the slider gently to draw the knife tip back slightly.



2 While holding the sheath, turn the handle slowly and align the direction of the hook.



3 Extend the knife and lock it.



1.3 mm

4.5 mm

Distal Hook

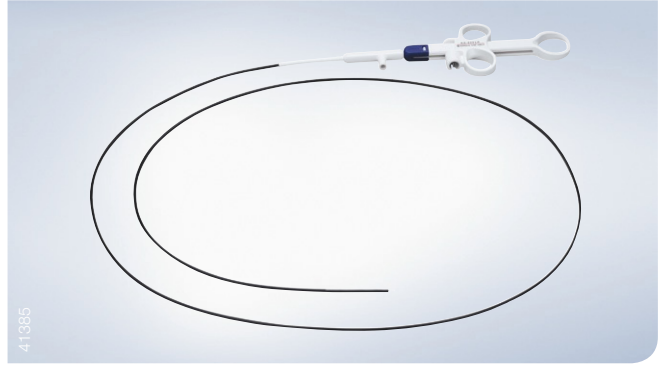
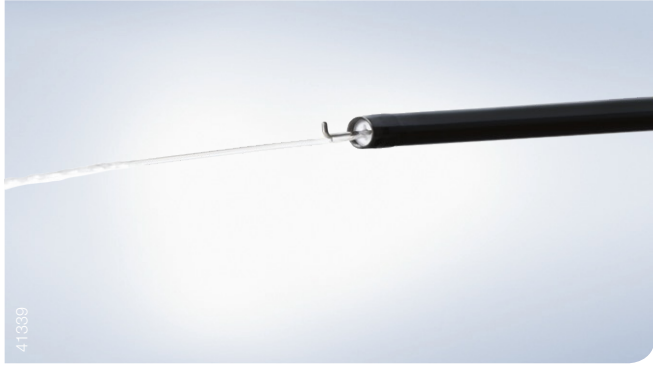
Hook the knife tip into the tissue to manipulate it during incision and dissection.

Injection Port

A distal exit allows saline to be injected through the sheath without changing devices.

41385

HOOKKNIFE J



Specifications

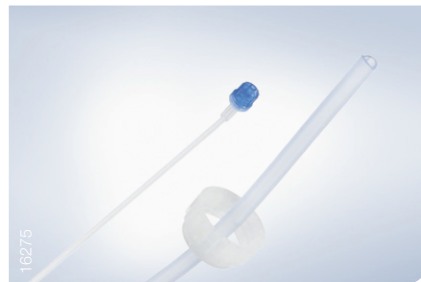
Model	Article Number	Quantity	Min. Working Channel Ø	Working Length	Cutting Knife Length When Extended	Length of Hook
KD-625LR	N5408530	1	2.8 mm	1650 mm	4.5 mm	1.3 mm
KD-625QR	N5408630	1	2.8 mm	1950 mm	4.5 mm	1.3 mm
KD-625UR	N5408730	1	2.8 mm	2300 mm	4.5 mm	1.3 mm

Related Products and Accessories

HookKnife J can be used together with the Olympus Flushing Pump OFP-2 in connection with the following sterile, single-patient tubes:



OFP-2 Pump



MAJ-1681



MAJ-1682

Specifications

Article Name	Article Number	Quantity	Description
MAJ-1681	K10026641	10	Accessory port tube with bottle cap
MAJ-1682	K10026686	10	Accessory port tube with spike
OFP-2	K10001143	1	Endoscopic flushing pump

Specifications, design, and accessories are subject to change without any notice or obligation on the part of the manufacturer.

OLYMPUS

OLYMPUS EUROPA SE & CO. KG
 Postbox 10 49 08, 20034 Hamburg, Germany
 Wendenstrasse 14-18, 20097 Hamburg, Germany
 Phone: +49 40 23773-0, Fax: +49 40 233765
 www.olympus-europa.com

